

BUSHEY Auctions

Catalogue £2

Catalogue

Auction of Silver, Jewellery, Fine Art, Antiques,
Collectables, Coins, Alcohol, Clocks and Watches,



Lot 393

Thursday 11th December 2025

Auction starts at 11am

Live Online Bidding

Absentee and Telephone Bids accepted

No Public Attendance on Auction Day

Viewing by Appointment

4th to 10th December

Unit 9 Shakespeare Industrial Estate, Watford. WD24 5RR

www.busheyauctions.com

**BID LIVE ONLINE FOR £3
PER AUCTION**
easyliveAuction.com

the-saleroom.com

BUSHEY Auctions

Welcome to Bushey Auctions

We hope you will have an enjoyable time bidding for the fantastic array of antiques, fine art, collectables, jewellery, silver etc from private collections. Please remember when placing your bid, the Buyers premium is 20% + VAT on top of the hammer price.

Please note that any lots purchased via online bidding portals will be subject to an additional commission charge imposed on the hammer price in addition to our basic Buyers Premium.

Please see the individual sites for rates of commission.

Bushey Auctions hold monthly auctions and valuation days; please see the back of the catalogue for forthcoming dates. We are happy to make personal appointments to view items for submission into future sales. We also offer probate and insurance valuations. Our team is always available to help, please don't hesitate to ask any of the team if you need assistance. The information below will help you enjoy the event; it sets out how the auction works.

CONDITIONS OF SALE

VIEWING (BY APPOINTMENT ONLY for 7 days before auction date)

The catalogue contains a Lot no, Description and Estimate for each lot. The description is for guidance only and as some items are of an age or nature that means they may not be in perfect condition, we advise you to examine the lots yourself before the auction starts. Please take care when handling items, all breakages and damage will be charged for. Viewing times are shown on the front of the catalogue. All items are offered for sale as viewed and are sold as seen. The Auctioneer does not take responsibility for authenticity, origin or estimated price. All items are sold without any warranty or claim as to its suitability or fitness for its apparent purpose so as a prospective Buyer, you should use your judgement. The wording A/F within the description is an indication that the lot may not be in good condition. All electrical items are sold on the express condition that the winner ensures they are examined by a competent electrician before connecting them to any source of electricity.

Condition Reports will be supplied until 4 p.m. the day before auction day.

All sales are final and no refunds are given.

RESERVE PRICES

Some items have a reserve price. Where necessary, the Auctioneer will protect the reserve on an item and use his discretion up to 10%. If this price is not reached, the Auctioneer will record the item as unsold and move on to the next item.

THE BUYER

The highest bidder as determined by the Auctioneer is the Buyer. The Auctioneer has absolute discretion to settle any dispute that may arise and to refuse bids or to advance the bidding as seen fit. His decision is final. These terms and conditions also apply to after-sale bids, timed auction bids and private treaty sales.

In cases of dispute these Conditions of Sale are governed by UK jurisdiction under English Law.

THE BUYER'S PREMIUM

This is the commission paid to the auctioneer by the Buyer over and above the highest bid value (often referred to as the Hammer Price) of each item. **OUR BUYER'S PREMIUM IS 20% + VAT (total 24%). So if you are the highest bidder on an item with a £100 bid, the total cost to you is £124. Please take this into account when bidding.**

Please see the individual sites for rates of commission.

Please note that any lots purchased via online bidding portals will be subject to an additional commission charge imposed on the hammer price in addition to our basic Buyers Premium. Certain works by living artists or artists deceased within the last 70 years will incur an Artist's Resale Right royalty charge when sold with a hammer price of £1000 or more.

ONLINE BIDDING

We offer online bidding services via www.easyliveauction.com and www.the-saleroom.com

Please note that any lots purchased via online bidding portals will be subject to an additional commission charge imposed on the hammer price in addition to our basic Buyers Premium.

Please see the individual sites for rates of commission.

Payment must be made within 48 hours, by debit card or bank transfer, collection is by appointment only from our Watford showroom. Unless by prior arrangement, storage charges of £5 per item per day will be incurred thereafter. If payment is not received a week after the auction date, the bidder's account will be blocked on all internet bidding sites (the comments are available to all auctioneers).

PAYMENT

You are welcome to pay by cash, cheque, electronic bank transfer or debit card. Credit cards will only be accepted up to the value of £500. A 3% surcharge will apply to Business debit/credit cards and International debit/credit cards. We reserve the right to hold items paid for by cheque until the cheque has cleared.

Please note, once the Auctioneer has determined yours to be the winning bid, a legal contract is created and you are responsible for and obliged to pay for the item(s). If full payment is not received within two weeks after the auction date Bushey Auctions reserve the right to hand the bidder's account over to our debt collection agency. In the event your account is passed for recovery please be advised you will be responsible for all additional costs which will include but not limited to debt recovery costs, legal costs, interest and storage charges. This will affect your bidder status at Bushey Auctions and any other auction houses as well as internet bidding sites and should the matter proceed through the courts this may affect your credit status. Bushey Auctions reserve the right to cancel the sale and re-sell the item(s) won and can also proceed against the Buyer for breach of contract. Any deposits or part payments shall be forfeited and the defaulter shall make good any loss arising from the resale, together with the charges and expenses in respect to both sales. So please only bid up to the amount you are prepared to pay and make sure you allow for the Buyer's Premium and VAT

Items that have been paid for not collected 3 months after the auction date will be sold by Bushey Auctions, the proceeds to defray storage charges.

IF YOU CAN'T MAKE THE AUCTION, WE CAN BID FOR YOU

If you would like to bid for an item, we are happy to bid on your behalf. Please request a form by email or complete the Absentee/Commission bidding form found on our website stating the maximum you are prepared to bid (minimum bid £20). You can also bid over the telephone for lots estimated over £50. The form to book a telephone line is also found on our website.

All forms must be received by 4 p.m. the day before auction day. Please note that acceptance is not guaranteed. We require debit or credit card details for all absentee/commission/telephone bids as security for your bid and may require a deposit of 50% of your maximum bid. We will then bid for you up to your maximum, attempting to secure the item at the lowest required to beat all other bids. We will contact you if you are the winning bidder for the lot(s) and will arrange payment and collection with you. Payment must be made within 48 hours and we reserve the right to charge the card given in full payment including all fees. Unless by prior arrangement, storage charges of £5 per item per day will be incurred thereafter.

| Lot No. | Description | Estimate |
|---------------------------------|--|-----------|
| Furniture & Lighting | | |
| 1 | A 19th century rectangular mahogany campaign chest with five drawers, brass handles and fittings, all on bun feet, 108 x 102 x 45cm | £120-£180 |
| 2 | A 16th century rectangular oak coffer with carved panelled sides and flat hinged cover, 60 x 118 x 50cm | £200-£300 |
| 3 | An antique oak campaign chest of rectangular form with side handles on four bun feet, 35 x 76 x 46cm | £40-£60 |
| 4 | A rectangular pine blanket box with hinged cover, 38.5 x 66.5 x 39.5cm | £50-£80 |
| 5 | An Edwardian rectangular mahogany pedestal desk with nine drawers, brass swing handles and an inlaid leather top, 75 x 120 x 66cm | £70-£100 |
| 6 | An Edwardian demi-lune mahogany and satinwood inlaid games table on tapering rectangular legs with original castors, 79 x 91 x 41cm closed | £100-£150 |
| 7 | A Queen Anne style walnut shaped rectangular games table on four cabriole legs, 77 x 94.5 x 48.5cm closed | £60-£90 |
| 8 | A Vernis Martin Louis XVI style glazed display cabinet with bow front on four cabriole legs, 175 x 73 x 40cm | £100-£150 |
| 9 | A French Louis XV style walnut kidney shaped two-tier lamp table with white marble and pierced brass galleried top, single drawer, gilt mounts and undertier, 70cm (h) | £80-£120 |
| 10 | George III style tilt-top tripod table, pierced pie crust border on turned column support and swept squared legs, 72 x 64cm | £200-£300 |
| 11 | A mahogany rectangular occasional table with two drawers on four turned supports and outswept legs, 66.5 x 47 x 41.5cm | £30-£50 |
| 12 | A mahogany Butlers tray with brass hinged sides on an X frame stand, 62.5 x 100 x 75cm | £60-£90 |
| 13 | An Edwardian marble and ormolu torchere of customary form with square plinth and stepped square base on four ormolu feet, 117 x 30 x 30cm | £120-£180 |
| 14 | An alabaster circular side table on knopped stem and raised circular base, 52.5 x 33cm | £50-£80 |
| 15 | A carved mahogany figural plant stand on three outswept legs, 75cm (h) | £50-£80 |
| 16 | A mahogany three tier plate stand with turned carrying handle, 80.5 x 36.5 x 31.5cm | £30-£50 |

| Lot No. | Description | Estimate |
|---------|---|-----------|
| 17 | A mahogany four section rectangular Canterbury with single drawer on original brass castors, 56.5 x 48 x 38cm | £50-£80 |
| 18 | QEII 1953 Coronation chair upholstered on four tapering rectangular legs with Coronation stamp to the inside side panel, 48 x 46 x 31cm | £250-£350 |
| 19 | A pair of French upholstered armchairs with turned cylindrical legs and arms | £80-£120 |
| 20 | A pair of early 20th century mahogany and bergere occasional chairs | £100-£150 |
| 21 | A French style gilded mahogany upholstered armchair on cabriole legs | £30-£50 |
| 22 | A Victorian upholstered chaise longue of customary form, 95 x 160 x 70cm | £50-£80 |
| 23 | Two late 18th century Flemish pewter floor-standing church altar candle-holders from Liege by Joiris, later converted to standing lamps, impressed marks to top, tallest 84cm (h) | £100-£150 |
| 24 | A pair of late 19th century gilt metal table lamps profusely decorated with masks, husks, swags, flowers and ribbons upported by turned columns on tapering fluted legs, to include silk shades, 58cm (h) | £120-£180 |
| 25 | An oriental bronze lamp stand decorated with stylised flowers, leaves and dragons, supported by three winged mythological beasts on raised circular base, to include shade, 52cm (h) | £40-£60 |
| 26 | A gilt metal and porcelain table lamp on black marble base, 60cm (h) | £50-£80 |
| 27 | A gilt metal three light table lamp with shade on raised circular base with three claw feet, 50cm (h) | £60-£90 |
| 28 | A Corinthian column gilt metal and ebonised table lamp to include shade, 44.5cm (h) | £40-£60 |
| 29 | A Corinthian column gilt metal table lamp to include shade, 44.5cm (h) | £40-£60 |
| 30 | A pair of white marble and gilt metal table lamps to include shades, 44cm (h) | £60-£90 |
| 31 | A white marble and gilt metal table lamp on rectangular base, to include shade, 44.5cm (h) | £50-£80 |
| 32 | A composition lamp stand on matching rectangular plinth, 133cm (h) | £40-£60 |

| Lot No. | Description | Estimate |
|-----------------|--|------------|
| Fine Art | | |
| 33 | L.S. Lowry framed and glazed polychromatic lithographic print of The Bearded Lady, signed bottom right, blind stamped bottom left, 61 x 50cm | £800-£1200 |
| 34 | Salvador Dali framed and glazed polychromatic print on silk titled The Emerald Table, limited edition 212/2000, signed bottom right, numbered bottom left, to include COA, 76 x 76.5cm | £100-£150 |
| 35 | Salvador Dali framed and glazed polychromatic print on silk titled The Ying and the Yang, limited edition 275/2000, signed bottom right, numbered bottom left, to include COA, 75 x 75cm | £100-£150 |
| 36 | Beryl Cook framed and glazed polychromatic limited edition A/P 54/60 titled The Twins, signed bottom right, 61 x 61cm | £180-£280 |
| 37 | Beryl Cook framed and glazed limited edition 49/650 polychromatic print of a trio of musicians, signed bottom right, 45 x 43.5cm | £150-£200 |
| 38 | Frank Martin framed and glazed limited edition 50/150 polychromatic print titled Carlton Astoria, signed bottom right, 27.5 x 53.5cm | £40-£60 |
| 39 | Georges Braque framed and glazed polychromatic print titled La Forêt (Lettera Amorosa) (1963), label to verso, 31 x 24cm | £60-£90 |
| 40 | Peter Adderley polychromatic print on canvas of a Harbour scene, signed bottom left, 75 x 100cm | £30-£50 |
| 41 | A pair of framed and glazed polychromatic engravings of Isle of Wight scenes, by G Brannon dated 1836 and 1838, each 18 x 24cm | £40-£60 |
| 42 | Charles Laborde framed and glazed monochromatic etching of figures in Oxford Street London, details to verso, 27 x 22.5cm | £50-£80 |
| 43 | Cyrus Cuneo framed and glazed monochromatic etching of a performance by Isadora Duncan dancing, 33 x 20cm | £50-£80 |
| 44 | Antoine Watteau framed and glazed monochromatic etching titled Tete d'Enfant Jouant de la Thite, label to verso, 18 x 13cm | £40-£60 |
| 45 | Donald Hughes framed and glazed pastel of figures in a street scene, signed bottom centre, 22.5 x 35cm | £70-£100 |
| 46 | Schmuer framed and glazed watercolour of four figures, signed bottom right, 34 x 16cm | £60-£90 |

Art measurements for image area only

| Lot No. | Description | Estimate |
|---------|--|-----------|
| 47 | Schmuer framed and glazed watercolour of figures in a bar, signed top right, 29.5 x 39.5cm | £60-£90 |
| 48 | Jolan P Williams framed and glazed pastel of a landscape, signed bottom right and dated 1928, 18.5 x 27.5cm | £70-£100 |
| 49 | Framed and glazed watercolour of Cote d Azure indistinctly signed bottom left, 45.5 x 62cm | £30-£50 |
| 50 | Frederick E J Goff (1855-1931) framed and glazed watercolour view of Sonning on Thames, signed bottom left, details to verso, 11 x 15cm | £100-£150 |
| 51 | Mary Holden Bird (1889-1978) framed and glazed watercolour seascape titled Autumn Tide, 19.5 x 35cm | £80-£120 |
| 52 | Geoffrey Stone framed and glazed watercolour of narrow boats on the Grand Canal Kings Langley near the Ovaltine factory, signed and dated bottom left, 37.5 x 53.5cm | £70-£100 |
| 53 | Edward Wolfe framed and glazed watercolour of Richard Hughes, signed bottom right, details to verso, 48 x 37.5cm | £120-£180 |
| 54 | Edward Wolfe framed and glazed watercolour of James O'Connor, signed bottom left, 43.5 x 29.5cm | £120-£180 |
| 55 | Albert De Bellerocche framed and glazed pencil and charcoal portrait of a young woman, signed bottom right, 45 x 64cm | £300-£500 |
| 56 | J Piggott framed and glazed early 19th century pencil drawing of an elderly man, 20.5 x 17.5cm | £30-£50 |
| 57 | Danielle Bucciarelli framed and glazed watercolour titled Toasting The Serving Maid, signed bottom right, label to verso, to include documents, 26 x 36.5cm | £70-£100 |
| 58 | Robert Alexander Hillingford framed oil on canvas of two ladies in 19th century dress drinking tea, monogrammed bottom right, to include documentation, 51 x 37.5cm | £500-£800 |
| 59 | Jules Antoine Voirin framed oil on canvas of figures by a stable with horses ,a cart and houses, signed bottom right, Richmond Gallery label to verso and other documents, 45.5 x 74.5cm | £400-£600 |
| 60 | Johann Hendrik van Mastenbroek framed oil on canvas titled The Little Dutch Harbour, signed bottom left, to include documentation, 38 x 58cm | £300-£500 |
| 61 | George Williams framed oil on canvas of cottage, figures and cattle by a river, gallery label to verso, 63.5 x 77cm | £500-£800 |
| 62 | Attributed to David I Cox 1783-1857 oil on canvas of a rural landscape with figures by a lake, label to frame, 36.5 x 54cm | £250-£350 |

| Lot No. | Description | Estimate |
|---------|---|-----------|
| 63 | Henry Maidment framed oil on panel titled Bringing Home the Sheep, signed bottom left, label to verso, 23.5 x 28cm | £80-£120 |
| 64 | Lev Batourin framed oil on canvas titled Moscow Interior, to include gallery invoice Roy Miles Gallery, 69 x 89.5cm | £200-£300 |
| 65 | Carlo Sdoya framed oil on panel street scene, signed bottom left, 49 x 39.5cm | £70-£100 |
| 66 | Richard Pearce framed oil on panel titled Tresco Channel from Tresco Shore, signed bottom left, 61 x 61.5cm | £70-£100 |
| 67 | Lido Bettarini framed oil on canvas titled Firenze, signed bottom right, 40 x 60cm | £150-£200 |
| 68 | G Dobbin framed oil on canvas of fishing boats Pin Mill Seafront, signed bottom right, 30.5 x 40.5cm | £50-£80 |
| 69 | Salvador Vasquez del Rio framed oil on panel titled Sierra de Ubeda Spain, signed bottom left, 49 x 65cm | £80-£120 |
| 70 | Salvador Vasquez del Rio framed oil on canvas titled Paysage Galaico Omino, signed bottom left, 33 x 55cm | £70-£100 |
| 71 | In the manner of Sir Thomas Lawrence (1769-1830 British) framed oil on canvas half length portrait of George IV wearing a fur lined coat and orders, 74 x 61cm | £400-£600 |
| 72 | A framed 19th century oil on canvas of a young girl in a tartan dress, 45.5 x 35.5cm | £70-£100 |
| 73 | Henry Clemont Van de Velde framed oil on panel of a scholar seated at a table reading a scroll, signed bottom right, 29 x 23cm | £150-£200 |
| 74 | Marie Bourdon-Loyzance framed oil on canvas portrait of a lady, signed bottom left, 46 x 38.5cm | £80-£120 |
| 75 | Marie Bourdon-Loyzance framed oil on canvas of a seated nude, signed top right, label to verso, 46 x 38.5cm | £80-£120 |
| 76 | Andre Deroo oil on panel of a seated female behind a wooden door, signed bottom left, certificate to verso, 80 x 100cm | £200-£300 |
| 77 | Andre Deroo oil on panel of a seated nude with a house in the background, signed bottom left, 60.5 x 80.5cm | £150-£200 |
| 78 | Schmuer framed oil on panel of figures in a club, signed top right, 32 x 45cm | £60-£90 |
| 79 | Casper framed oil on canvas of a white-bearded man in red robes drinking from a goblet, signed bottom right, 50 x 40cm | £60-£90 |
| 80 | Attributed to George Armfield (c1803-1893 British) two framed oils on canvas of sporting dog terriers beside a brace of dead rabbits and two terriers beside a burrow, each 19 x 28cm | £300-£500 |

| Lot No. | Description | Estimate |
|---------|--|-----------|
| 81 | A vintage oil on panel of Moose Hunting, monogrammed TES 1934, label to verso, 24 x 32.5cm | £80-£120 |
| 82 | A Hoffman framed oil on canvas still life of flowers in a copper vase, signed bottom right, 75 x 62cm | £200-£300 |
| 83 | Gale framed oil on canvas expressionist still life of flowers, signed bottom right, 73.5 x 54cm | £70-£100 |

Porcelain

| | | |
|----|--|-----------|
| 84 | Minton Haddon Hall dinner and tea service to include plates, bowls, cups and saucers (98) | £180-£280 |
| 85 | Royal Albert Lady Hamilton dinner and tea service to include plates, bowls, cups, saucers, serving dishes, platters, a coffee pot and a teapot (103) | £250-£350 |
| 86 | Royal Albert Old Country Roses dinner and tea service to include plates, bowls, cups, saucers, platters, cake plates and dishes (115) | £200-£300 |
| 87 | Aynsley Pembroke dinner, tea and coffee service to include plates, bowls, cups, saucers, a teapot, a coffee pot, serving dishes, a meat platter, vases and bonbon dishes (155) | £200-£300 |
| 88 | Royal Doulton Cambridge pattern dinner and tea service for eighteen place settings to include plates, bowls, cups, saucers, serving dishes, sauce boat and stand, teapot, milk jug, sugar bowl and a meat platter (117) | £250-£350 |
| 89 | Royal Albert Old Country Roses dinner and tea service to include plates, bowl, cups, saucers, serving dishes and platters (173) | £300-£500 |
| 90 | Royal Crown Derby, Derby Days tea service to include teapot, coffee pot, sugar bowl, milk jug, sandwich plate, cake plates, cups and saucers and side plates (43) | £200-£300 |
| 91 | Aynsley teaset for twelve place settings to include cups, saucers, plates and a cake plate (40) | £70-£100 |
| 92 | Royal Albert Old Country Roses teaset for twelve place settings to include a teapot, milk jug, sugar bowl, cups, saucers and biscuit plates (50) | £100-£150 |
| 93 | Herend blue Apponyi pattern café au lait to include a chocolate pot, two cups and saucers, an oval tray, a sugar bowl and a milk jug (8) | £200-£300 |

| Lot No. | Description | Estimate |
|---------|---|-----------|
| 94 | Herend candlestick with applied flowers on circular base, 12.5cm (h) and a Herend bowl decorated with floral sprays, 10cm (d) marks to the bases | £40-£60 |
| 95 | A quantity of cabinet cups and saucers by various makers to include Aynsley, Hammersley and Crown Staffordshire (17) | £80-£120 |
| 96 | Three graduated early 19th century Staffordshire Ironstone cobalt blue and gold pitchers, tallest 20cm, a small jug, five cups and three saucers of Imari and Welsh Gaudy decoration (12) | £80-£120 |
| 97 | A Meissen 19th century cylindrical hand painted chocolate cup and cover decorated with a courting couple in a rural setting, marks to the base, 12cm (h) | £80-£120 |
| 98 | An early Chelsea 19th century rococo style inkwell in the form of a flower on a leaf decorated with applied floral blooms the pull-off cover with flower finial, red anchor mark to the base, 9cm (h) A/F | £30-£50 |
| 99 | Royal Worcester baluster vase decorated with flowers and gilding, marks to the base, 17cm (h) | £30-£50 |
| 100 | A Meissen desk stand of shaped rectangular form decorated with courtly scenes and floral sprays, two detachable inkwells with pull off covers, marks to the bases, 6 x 22 x 15.5cm, A/F | £70-£100 |
| 101 | A Dresden two handled baluster vase decorated with Deutsch Blumen and painted landscapes, 22cm (h) A/F | £60-£90 |
| 102 | A continental two handled vase with applied floral decoration, 10.5cm (h) | £40-£60 |
| 103 | A pair of Austrian decorative jugs with gilded handles and floral painted detail, marks to the bases, 18cm (h) | £70-£100 |
| 104 | A continental porcelain and gilt metal table centrepiece with naturalistic scrolling arms on open quatrefoil base, 29cm (h) A/F | £60-£90 |
| 105 | A pair of French Sevres style vases and covers, decorated with panels of courtly scenes with mask and leaf side handles on raised square gilded bases, 31.5cm A/F | £120-£180 |
| 106 | A pair of Doulton Lambethware late 19th century three handled baluster vases, the gilded bodies with geometric borders all on three bracket feet, marks to inside bases, 17.5cm (h) | £100-£150 |
| 107 | H. Aynsley and Sons by special appointment to Queen Victoria, a moustache cup and saucer and a Victorian Diamond Jubilee 1897 plate, marks to the bases, plate 24.5cm | £150-£200 |

| Lot No. | Description | Estimate |
|---------|--|-----------|
| 108 | Clarice Cliff Bizarre honey pot and cover, marks to the base, 9.5cm (h) | £40-£60 |
| 109 | Clarice Cliff Bizarre honey pot and cover, marks to the base, 10.5cm (h) | £40-£60 |
| 110 | Clarice Cliff honey pot and cover decorated with flowers and leaves, marks to the base, 8cm (h) | £30-£50 |
| 111 | A quantity of Clarice Cliff to include a Fantasque Bizarre jam pot and cover and a Bizarre cup and plate, marks to the bases, tallest 9cm (h) | £60-£90 |
| 112 | Three Clarice Cliff plates decorated with flowers and leaves, 21.5cm (d) | £40-£60 |
| 113 | Wedgwood Jasperware oil jug decorated with a hunting scenes, 17.5cm (h) | £30-£50 |
| 114 | Six novelty Sadlers teapots of various shape and style, tallest 15cm (h) | £60-£90 |
| 115 | Minton majolica circular plant stand decorated with deer by a tree all on three scroll legs, 39cm (h) A/F | £70-£100 |
| 116 | Chinese ceramic fish bowl the sides decorated in blue on white with birds and peonies, with black marble stand, 35 x 42cm | £150-£200 |
| 117 | An early 18th century English Delft porcelain plate of blue and white stylised leaves on carved hardwood stand, 30cm (d) A/F | £30-£50 |
| 118 | An early 20th century Chinese charger depicting a figure in ceremonial robe within a border decorated with dragons, flowers and leaves on carved hardwood stand, 46cm (d) | £80-£120 |
| 119 | A Chinese 19th century bowl decorated with flowers and leaves, 23.5cm (d) | £60-£90 |
| 120 | An oriental style hand painted bowl, the fluted sides with gilded borders and floral sprays, marks to the base, 30cm (d) | £80-£120 |
| 121 | An oriental blue and white baluster vase decorated with figures in a landscape, 25cm (h) | £80-£120 |
| 122 | A Chinese polychromatic stem vase decorated with bats and symbols, marks to the base, 31cm (h) | £60-£90 |
| 123 | Chinese circular polychromatic plaque decorated with birds and flowers, signed top left, 27.5cm (d) | £80-£120 |
| 124 | A pair of Chinese cloisonné vases and covers, the ovoid bodies decorated with butterflies, flowers and leaves with domed pull off covers to include carved hardwood stands, 25cm (h) | £50-£80 |

| Lot No. | Description | Estimate |
|---------|--|-----------|
| 125 | A pair of Chinese cloisonné baluster vases decorated with flowers and leaves on rim feet, 24.5cm (h) | £50-£80 |
| 126 | A Meissen style classical figural group to include a couple, putti and doves all on raised naturalistic base, 29cm (h) A/F | £100-£150 |
| 127 | A Meissen figurine of a lady in 18th century attire seated by a table with a basket of flowers, marks to the base, 14 x 10 x 8cm | £120-£180 |
| 128 | Wedgwood 1959 polychromatic bust of Penelope, signed to the base Wedgwood 3A59, 28cm (h) | £120-£180 |
| 129 | Royal Doulton figurine of St George on horseback and the Dragon HN2051, signed to the base, 19cm (h) | £30-£50 |
| 130 | Three Royal Doulton figurines to include Silk and Ribbons HN2017, The Balloon Seller HN1315 and The Mask Seller HN2013, tallest 22cm (h) | £50-£80 |
| 131 | Two Lladro figurines to include The Bar Mitzvah Boy and a Clown playing an accordion, tallest 29.5cm | £30-£50 |
| 132 | Kevin Frances Ceramics two figurines to include Clarice Cliff and Moulin Rouge, marks to the bases, tallest 25cm (h) | £50-£80 |
| 133 | Beswick figurines of horses and donkeys to include a Dapple Grey and a foal (5) | £30-£50 |
| 134 | Four Parianware busts to include Chopin, Mendelsohn, Michaelangelo and Shakespeare, tallest 23cm (h) | £150-£200 |

Glass

| | | |
|-----|--|-------------|
| 135 | Galle glass vase circa 1900 of compressed squat form decorated with flowers and leaves, signed to the side, 12 x 23cm | £2000-£3000 |
| 136 | R Lalique poisson dish with spiral of sardines with a field of bubbles at the base, opalescent, raised marks to centre, 9.5 x 29cm | £300-£500 |
| 137 | Lalique crystal Bagatelle clear and frosted glass vase, moulded with birds and branches, signed to the base, 17 x 12.5cm | £250-£350 |



Lot 137

| Lot No. | Description | Estimate |
|---------|---|-----------|
| 138 | A Lalique Auriac crystal bowl originally designed in the 1930s with a frosted zigzag interwoven border, signed to the base, 29 cm (d) | £200-£300 |
| 139 | Lalique smiling Buddha paperweight of customary form, signed to the base, 10cm (h) | £200-£300 |
| 140 | Lalique Saint Valentine Crystal heart shaped desk clock, signed to the base, 8 x 8cm | £60-£90 |
| 141 | Lalique Orchidee Flacon collection edition 2020 sealed perfume bottle in original packaging, limited edition to include COA | £400-£600 |
| 142 | Lalique de Lalique Deux Paons Crystal Flacon collection edition 2014 perfume bottle and sealed container of perfume all with original packaging | £400-£600 |
| 143 | A white metal and glass champagne cooler of globular form with white metal mounts by St Hilaire, 23cm (h) | £80-£120 |
| 144 | A Tiffany and Co. square glass fruit bowl with fluted sides and base, signed to the base, 12 x 20.5 x 20.5cm | £30-£50 |
| 145 | St Louis crystal Art Glass vase, signed to the base M. Colls and etched St Louis, 29.5cm (h) | £200-£300 |
| 146 | A Bohemian overlaid blue glass chalice decorated with gilding on raised circular base, 15.5cm (h) | £50-£80 |
| 147 | A cut glass ships decanter with drop stopper and hallmarked silver collar, Birmingham 1912 | £60-£90 |
| 148 | A cut glass decanter of rectangular form with drop stopper and hallmarked silver collar, Birmingham 1976 | £40-£60 |
| 149 | A silver plated shaped hexagonal glass ships claret jug with scroll handle and hinged cover, 22cm (h) | £30-£50 |
| 150 | Four cut glass and silver plated claret jugs of various shape and form, tallest 30cm (h) | £80-£120 |
| 151 | A quantity of cut glass to include, bowls, decanters. jugs and drinking glasses decorated with a floral design (83) | £200-£300 |
| 152 | A boxed set of six Bohemia hand-cut crystal brandy glasses by Jones Glass of Czechoslovakia | £40-£60 |
| 153 | A set of six Daum orangeade glasses, signed to the base, 15.5cm (h) | £200-£300 |
| 154 | Eight cranberry coloured cut glass hock glasses on raised circular bases | £60-£90 |

| Lot No. | Description | Estimate |
|---------|--|-----------|
| 155 | A pair of Bohemian rectangular glass spill vases with white overlay and floral decoration, 11cm (h) | £50-£80 |
| 156 | Twelve glass perfume bottles of various form, shape and size, tallest 15cm (h) | £60-£90 |
| 157 | Nine glass paperweights to include Mdina, Svaja and Siddy Langley, tallest 17cm (h) | £50-£80 |
| 158 | A pair of Victorian lustres of circular form on raised circular bases with stylised leaf borders, 29.5cm (h) | £100-£150 |
| 159 | A pair of 19th century midnight blue mercury glass witch balls, each 15cm (d) | £250-£300 |
| 160 | A pair of late 19th century storm lanterns with engraved glass shades on bronze bases with faceted glass drops and trefoil bases, 46cm (h) | £150-£200 |

Collectables

| | | |
|-----|--|------------|
| 161 | After Jean de (Giovanni de) Giambologna (1529-1608) a pair of 19th century cast bronze grand tour figurines of Mercury and Fortuna, supported on masks representing the winds and raised on circular plinth bases relief decorated with cherubs, each 71cm (h) | £800-£1200 |
| 162 | A bronze figurine of an Archer mounted on a raised circular wooden plinth, signed to the base Art Union London, 31cm (h) | £80-£120 |
| 163 | A pair of 19th century bronze cupids, one with tambourine the other with triangle on circular naturalistic bases, 22.5cm (h) | £80-£120 |
| 164 | A pair of gilt bronze Marley horses on shaped oval naturalistic bases, 19.5cm (h) | £40-£60 |
| 165 | A pair of late 19th century Grand Tour classical temples with gilt metal columns, figural bust to the centre with leaf finials all on stepped circular black marble bases, 25cm (h) | £80-£120 |
| 166 | A pair of mid 19th century spelter two colour covered urns decorated with putti and bacchanalian themes, on raised circular bases, 39.5cm (h) | £100-£150 |
| 167 | A mid 20th century painted metal candlestick in the form of a butler with the head of a dog, 38cm (h) | £30-£50 |
| 168 | An early 19th century white marble and ormolu tazza from the Gianni Versace collection, previously sold at Sotheby's 2009, 28.5 x 21x 17cm | £200-£300 |

| Lot No. | Description | Estimate |
|---------|---|----------|
| 169 | A pair of cast iron wall mounted candle holders of scrolling form with cylindrical nozzles, 42cm (h) | £50-£80 |
| 170 | A copper milk canister with pull off cover and embossed name to the side and cover, 50 x 35cm | £30-£50 |
| 171 | Picad and Co. copper and brass urn on a circular stand with burner all on four lion claw feet, 33cm (h) | £30-£50 |
| 172 | Two Middle Eastern brass teapots with hinged covers and scroll handles, tallest 35cm (h) | £40-£60 |
| 173 | A quantity of copper and brass to include kettles, a pot and cover, an oil jug and a water jug (12) | £60-£90 |
| 174 | Glasgow School of Arts & Crafts brass thistle tea caddy of rectangular form the cover set with a cabochon disc, c.1900 | £60-£90 |
| 175 | A pair of early 20th century wooden and gilded wall brackets carved with acanthus leaves, 17cm (h) | £30-£50 |
| 176 | A late 19th century The Crown Rotary knife cleaner of wooden drum form on cast iron stand, 43.5 x 44cm | £50-£80 |
| 177 | An early 20th century Academy gramophone to include copper horn and winder, 75cm (h) | £50-£80 |
| 178 | An early 20th century Euphonium with presentation engraving and applied embossed Royal Coat of Arms, all in fitted case | £70-£100 |
| 179 | A quantity of copper and brass horns to include three hunting horns and a bugle (4) | £60-£90 |
| 180 | Gledhill and Sons Ltd of Halifax vintage rectangular oak cash register with brass handle and ringing bells, 18 x 39 x 19.5cm | £50-£80 |
| 181 | W M Mallinson and Sons 1920s salesmans bound display for the sample wood veneers | £60-£90 |
| 182 | An early 20th century Imperial typewriter in original fitted case | £40-£60 |
| 183 | Two pairs of binoculars to include Carl Zeiss Jena Jenoptem 8 x 30w in fitted leather case and Omega 10 x 50 field 5 deg No. 8039 in fitted leather case | £30-£50 |
| 184 | Voigtlander Compur Brilliant camera in leather case and an Ensign Ensignette No 2 Deluxe folding camera and a pair of WWI leather cased Bausch and Lomb binoculars (3) | £80-£120 |
| 185 | Petie 1:9 miniature camera in original leather case | £40-£60 |
| 186 | Post Office Directory novelty travelling inkwell, papier-maché stamp box with cover depicting the Marquis of Huntingdon MP, Japanese circular antimony trinket box with dragon relief cover, Sondico India whistle and a magnifying glass (7) | £80-£120 |

| Lot No. | Description | Estimate |
|---------|--|-----------|
| 187 | Twelve vintage propelling pencils to include 1940s hallmarked silver JM & Co, Samson Mordan, Wahl Eversharp USA Sterling silver and cased rolled gold Yard-O-Led (12) | £80-£120 |
| 188 | Twelve vintage fountain pens to include Parker Slimfold 585 14k gold nib, Mabie Todd Blackbird, Mentmore Auto-flow 14ct gold nib, boxed Mentmore stud-filling, Parker duofold, a Platignum Deluxe calligraphy pen set and a cased Watermans Hemisphere marbled blue roller ball pen (14) | £80-£120 |
| 189 | A quantity of writing implements to include Sheaffer, Parker and Messenger all in original packaging | £40-£60 |
| 190 | Victorian TB Winter cased planimeter and cased AG Thornton drawing instruments, a Rabone and boxwood wooden rulers | £80-£120 |
| 191 | William Rodgers WWII commando knife, a boxed and unused GBD maître-pipier Saint-Claude pipe, a Dunhill metal pipe cleaner in leather case, boxed Lund cut-throat razor, two penknives and watch repair tools (8) | £80-£120 |
| 192 | Six grand tour style classic plaster intaglios in fitted gilt wood glazed frames, largest 42 x 12.5cm | £100-£150 |
| 193 | 1930/40s autograph book to include actors Laurence Olivier, Vivienne Leigh, Ralph Richardson, Leslie Howard, Gene Raymond and Hugh Burden | £60-£90 |
| 194 | Six pairs of gold framed pince-nez spectacles, three retractable brooch spectacle chains, one in a 9ct gold case, and a pair of tortoiseshell double folding lorgnettes (10) | £80-£120 |
| 195 | Le Banquier casino gaming card dealers shoe and a set of gaming counter chips in a leather case | £150-£200 |
| 196 | Fluorite and quartz crystal found in Cumberland, 7 x 10 x 8cm | £70-£100 |
| 197 | An unpolished garnet, 5 x 6cm | £50-£80 |
| 198 | Four framed and glazed polychromatic silhouettes of ladies and gentlemen in 19th century dress, 9.5 x 7.5cm | £50-£80 |
| 199 | Four framed monochromatic silhouettes of ladies and gentlemen, two signed Ray, 8.5 x 6cm | £50-£80 |
| 200 | Five framed miniatures of ladies and gentlemen, 11 x 8.5cm | £120-£180 |
| 201 | A large Esco chalkware figurine of Harpo Marks on raised oval base, dated 1973, 45cm (h) | £60-£90 |
| 202 | Pre-Columbian Mesoamerican style ceramic funerary figurine in kneeling position, based on West Mexican tomb sculptures, 19cm (h) | £60-£90 |

| Lot No. | Description | Estimate |
|---------|--|-----------|
| 203 | A Chinese composition laughing Buddha figurine holding his staff and a sack, 15.5cm (h) | £40-£60 |
| 204 | A quantity of cloisonné to include a table bell, a miniature vase and cover, a turtle, a cat and an ostrich egg decorated with polychromatic flowers, leaves and scrolls on turned hardwood stand, tallest 20cm (h) | £50-£80 |
| 205 | A set of twelve The Guardians of the Ming Dynasty animal figurines to include original documentation, packaging and wooden stand | £50-£80 |
| 206 | Mr B.G. Hanton R.A.F. V.R WWII Royal Air Force photographer album of WWII photographs, service and release book and medals to include 1939-1945 Star, France and Germany Star and George VI medal | £80-£120 |
| 207 | WWI trench cart bangle made from shell cases with an Iran Cross inscription | £60-£90 |
| 208 | A quantity of WWI and WWII military medals, hat and cap badges and buttons, WWI medals attributed to 558073 PTE T GOLDBERG LABOUR CORPS | £80-£120 |
| 209 | Victorian South Africa medal with five bars to include Cape Colony, Orange Free State, Transvaal, South Africa 1900 and South Africa 1902 attributed to 1385 TPR. H. F. HUBBARD S.A.C. and a George V WWI medal attributed to LIEUT. H. F. HUBBARD | £70-£100 |
| 210 | A hallmarked silver and enamel Masonic medal in fitted case, two silver gilt and enamel Deucalion Lodge No. 7511 jewels and a hallmarked silver framed plaque with stylised calligraphy | £100-£150 |
| 211 | A quantity of pre 1920 and 1947 silver coins, approx total weight 65.8g | £30-£50 |
| 212 | A quantity of pre 1947 GB silver coins, approx total weight 1080g | £250-£350 |
| 213 | A quantity of pre 1947 GB silver Two shilling coins, approx total weight 1476g | £400-£600 |
| 214 | A quantity of GB silver shillings and sixpences, approx total weight 1517g | £400-£600 |
| 215 | Hadrian AD 117-118 Silver Denarius | £40-£60 |
| 216 | Three 1997-1998 silver proof £2 coin sets | £100-£150 |
| 217 | Two Canadian 1977 silver Jubilee Dollars in original fitted cases and a 1986 Two Pound silver coin in fitted case | £30-£50 |

| Lot No. | Description | Estimate |
|----------------|--|-----------|
| Alcohol | | |
| 218 | Louis Roederer Blanc de Blancs 2000 vintage champagne 75cl | £50-£80 |
| 219 | Moet and Chandon Brut Imperial magnum (1.5 litre) in original packaging | £40-£60 |
| 220 | W & J Grahams late bottled vintage 1985 port in original wooden case, 70cl | £40-£60 |
| 221 | Royal Oporto 1970 vintage port 26 fl oz in original packaging | £50-£80 |
| 222 | Royal Oporto 1970 vintage port 26 fl oz in original packaging | £50-£80 |
| 223 | Royal Oporto 1970 vintage port 26 fl oz in original packaging | £50-£80 |
| 224 | J Chapoulie 1933 vintage Armagnac, 70cl in fitted wooden packaging | £120-£180 |
| 225 | Four bottles of vintage Courvoisier Luxe cognac, 680ml bottles | £80-£120 |
| 226 | Royal Salute 21 year old Scotch Whisky The Signature Blend in original presentation packaging, 70cl | £50-£80 |
| 227 | 1969 Chateau Lafite Rothschild Pauillac, 75cl | £300-£500 |
| 228 | 1969 Chateau Lafite Rothschild Pauillac, 75cl | £300-£500 |
| 229 | Domaine des Bosquets Gigondas 2008 four 75cl bottles | £60-£90 |
| 230 | Three bottles of French red wine to include Chateau Fontenil 2003 Fronsac 75cl, Chevalier de Lascombes 2004 Margaux 75cl and Chateau Paloumey 2004 Cru Bourgeois Haut-Medoc 75cl | £70-£100 |
| 231 | Three bottles of French red wine to include Chateau Cissac 1998 Cru Bourgeois Haut-Medoc 75cl, Chateau Lagrezette 2000 Cahors 75cl and Commanderie du Grand Moulin 2003 75cl | £60-£90 |

Clocks & Watches

| | | |
|-----|--|-----------|
| 232 | A French 19th century white marble and gilt metal mantle clock, the white enamel dial with Arabic numerals supported by four columns on a circular base with candelabra garnitures, to include key and pendulum, 38cm (h) | £300-£500 |
| 233 | A late 19th century French mantle clock with gilt metal mounts, the porcelain panels depicting courtly scenes and landscape, the circular enamel dial with Roman numerals flanked by garnitures decorated with figures and landscapes, 40cm (h) | £80-£120 |
| 234 | Jaeger leCoultre quartz oval brushed gilded metal desk clock, to include original case and documents | £250-£350 |
| 235 | Jaeger leCoultre skeleton 8 day gilt metal and plexi glass mantle clock of circular form on raised rectangular base, 16 x 15cm | £220-£320 |

| Lot No. | Description | Estimate |
|---------|---|-------------|
| 236 | A brass four glass mantle clock, white dial, Roman numerals and mercury pendulum to include key, 30 x 17 x 14cm | £120-£180 |
| 237 | An early 20th century walnut mantle clock with silvered chapter ring and Roman numerals, 24.5 x 17 x 8cm | £80-£120 |
| 238 | An automation bird cage clock of cylindrical form, two birds in open cage on raised circular base with three peg feet, 15cm (h) | £40-£60 |
| 239 | A brass carriage clock of customary form with repeat button, white enamel dial, Roman numerals, to include key, 14cm (h) | £80-£120 |
| 240 | A brass carriage clock of rectangular form, fluted sides and swing handle on raised circular feet, white enamel dial with Roman and original key, 15.5cm (h) | £40-£60 |
| 241 | A miniature travel carriage clock, white enamel dial with Arabic numerals and subsidiary seconds dial on four bun feet, in original leather case, 7.5 x 5.5cm | £30-£50 |
| 242 | Omega 18ct white gold ladies wristwatch on 18ct white gold articulated bracelet, approx total weight 46.2g | £1500-£2000 |
| 243 | Omega 18ct yellow gold ladies wristwatch on an articulated 18ct gold bracelet, to include original case, approx total weight 26.2g | £1000-£1500 |
| 244 | Royce 14ct yellow gold ladies wristwatch on a 14ct articulated bracelet, approx total weight 22.4g | £700-£1000 |
| 245 | Gucci Timepiece ladies wristwatch model no. 729101 with multi coloured interchangeable bezel to include original packaging and documents | £300-£500 |
| 246 | Longines La Grande Classique ladies wristwatch with articulated bracelet | £100-£150 |
| 247 | Rotary stainless steel Chronograph with red dial on a stainless steel articulated bracelet | £100-£150 |
| 248 | Dreyfuss and Co. gentlemen's wristwatch with date aperture and subsidiary seconds dial on original leather strap | £150-£200 |
| 249 | Ladies Longines mechanical 17 jewels wristwatch on a leather strap | £40-£60 |
| 250 | A rare WWII Renova Gun metal pocket watch with white enamel dial Arabic numerals and subsidiary seconds dial | £80-£120 |
| 251 | A cased pocket watch with a gilded chain, all in fitted case | £30-£50 |
| 252 | A quantity of pocket watches and accessories in a rectangular wooden box with hinged cover | £80-£120 |

| Lot No. | Description | Estimate |
|------------------|--|-----------|
| Jewellery | | |
| 253 | A quantity of costume jewellery to include rings, earrings, bracelets, necklaces, pendants, bangles and wristwatches | £40-£60 |
| 254 | A quantity of costume jewellery to include necklaces, bracelets, bangles and earrings | £100-£150 |
| 255 | A quantity of costume jewellery to include necklaces, bangles, pendants and earrings | £100-£150 |
| 256 | A quantity of costume jewellery to include necklaces, bracelets, bangles, earrings and brooches | £120-£180 |
| 257 | A quantity of silver and costume jewellery to include necklaces, earrings and brooches | £40-£60 |
| 258 | A quantity of costume jewellery to include bracelets, brooches, necklaces and pendants | £60-£90 |
| 259 | A quantity of silver and costume jewellery to include necklaces, rings, earrings, pendants and bracelets | £100-£150 |
| 260 | A quantity of costume jewellery to include necklaces, earrings, rings, brooches, bracelets, pendants and watches | £100-£150 |
| 261 | A white metal circular covered box and a quantity of costume jewellery to include earrings | £50-£80 |
| 262 | A quantity of silver and costume jewellery to include bracelets, necklaces and earrings | £60-£90 |
| 263 | A quantity of silver and white metal costume jewellery to include bracelets and a bangle | £60-£90 |
| 264 | A silver chain, a silver ring and a gold plated ring | £30-£50 |
| 265 | Three cameo brooches and a cameo ring (4) | £80-£120 |
| 266 | A double strand of cultured pearls with a 9ct gold clasp | £80-£120 |
| 267 | A Victorian white metal muff chain, 158cm (l) approx total weight 109g | £60-£90 |
| 268 | Early 20th century French Art Nouveau white metal openwork bangle bracelet by Flam decorated with cats playing with balls, internal diameter 5.5cm | £80-£120 |
| 269 | 18ct yellow gold five stone tanzanite and diamond ring, approx total weight 2.4g | £150-£200 |
| 270 | 18ct gold three stone diamond dress ring, approx total weight 3.1g | £150-£200 |
| 271 | Yellow gold, diamond and ruby cocktail ring, tested 14ct, approx total weight 5.7g | £300-£500 |

| Lot No. | Description | Estimate |
|---------|---|-----------|
| 272 | 18ct yellow gold and diamond dress ring, approx total weight 6.5g | £500-£800 |
| 273 | 14ct yellow gold and emerald dress ring, approx total weight 1.8g | £60-£90 |
| 274 | White gold and diamond eternity ring (one stone missing) approx total weight 5.0g | £300-£500 |
| 275 | A yellow gold diamond and ruby Art Deco style cocktail ring, approx total weight 12.0g | £500-£800 |
| 276 | 9ct yellow gold and smokey topaz dress ring, approx total weight 14.9g | £120-£180 |
| 277 | 9ct yellow gold and pearl ring, approx total weight 5.0g | £70-£100 |
| 278 | 18ct yellow gold, diamond and ruby dress ring, approx total weight 2.7g | £180-£280 |
| 279 | 18ct white gold and diamond solitaire ring, approx total weight 2.9g | £150-£200 |
| 280 | 9ct yellow gold and blue zircon cocktail ring, approx total weight 6.7g | £70-£100 |
| 281 | 9ct yellow gold and diamond solitaire ring, approx total weight 1g | £30-£50 |
| 282 | 9ct yellow gold sapphire and diamond three stone ring, approx total weight 1.5g | £40-£60 |
| 283 | 9ct yellow gold half eternity sapphire ring, approx total weight 3.2g | £100-£150 |
| 284 | 9ct white gold and coloured stone ring, approx total weight 3.6g | £100-£150 |
| 285 | 9ct yellow gold ring in the form of a stylised tiger, approx total weight 2.7g | £70-£100 |
| 286 | 9ct gold half eternity ring set with coloured stones, approx total weight 1.2g | £30-£50 |
| 287 | 9ct yellow gold, diamond and emerald dress ring, approx total weight 2.6g | £80-£120 |
| 288 | 9ct yellow gold, emerald and diamond cluster ring, approx total weight 2.7g | £70-£100 |
| 289 | 9ct yellow gold, ruby and diamond ring and matching pendant, approx total weight 3.5g | £120-£180 |
| 290 | A Victorian 9ct gold ring set with garnets and spinels and two other rings | £80-£120 |
| 291 | 22ct wedding band, approx total weight 1.0g | £60-£90 |

| Lot No. | Description | Estimate |
|---------|---|-----------|
| 292 | 22ct yellow gold wedding band, approx total weight 6.9g | £400-£600 |
| 293 | 9ct white gold wedding band, approx total weight 1.7g | £40-£60 |
| 294 | Arsenal FC 9ct yellow gold signet ring, approx total weight 2.2g | £50-£100 |
| 295 | 9ct yellow gold ring, approx total weight 4.1g | £100-£150 |
| 296 | 9ct yellow gold ring, approx total weight 6.8g | £180-£280 |
| 297 | 9ct gold Crucifix ring, approx total weight 1.6g | £40-£60 |
| 298 | 18ct yellow gold wedding band, approx total weight 1.6g | £80-£120 |
| 299 | Four 9ct yellow gold rings, approx total weight 5.3g | £120-£180 |
| 300 | Three 9ct gold rings A/F, approx total weight 11.6g | £280-£380 |
| 301 | A pair of white gold and diamond half hoop earrings, gold tested 18ct, approx total weight 3.6g | £200-£300 |
| 302 | A pair of 9ct gold and diamond half hoop earrings, approx total weight 1.6g | £80-£120 |
| 303 | A pair of 9ct gold and coloured stone earrings, approx total weight 3.7g | £80-£120 |
| 304 | Four pairs of 9ct gold earrings of various shape and style, approx total weight 4.1g | £100-£150 |
| 305 | Six pairs of 9ct gold earrings of various shape and style, approx total weight 6.1g | £150-£200 |
| 306 | 9ct yellow gold Crucifix pendant on a 9ct gold fancy link chain, approx total weight 21.1g | £500-£800 |
| 307 | 9ct yellow and white gold Crucifix pendant on a 9ct yellow gold chain, approx total weight 4.2g | £100-£150 |
| 308 | 9ct yellow gold and coloured stone Crucifix pendant on a 9ct gold chain, approx total weight 1.1g | £30-£50 |
| 309 | 9ct yellow gold Crucifix pendant on a 9ct gold chain, approx total weight 3.1g | £70-£100 |
| 310 | 9ct white gold Crucifix pendant set with diamonds and blue stones on a 9ct white gold chain, approx total weight 4.9g | £180-£280 |
| 311 | 9ct filigree gold Crucifix pendant set with a cabochon garnet on a 9ct gold chain, approx total weight 5g | £150-£200 |
| 312 | 9ct yellow gold Crucifix pendant inset with a 1982 half sovereign on a 9ct gold fancy link chain, approx total weight 13.9g | £500-£800 |
| 313 | 9ct gold Crucifix pendant on a 9ct gold chain, approx total weight 5.3g | £140-£200 |
| 314 | 9ct yellow gold double sided Crucifix pendant set with coloured stones on a 9ct gold chain, approx total weight 4.9g | £150-£200 |

| Lot No. | Description | Estimate |
|---------|--|-----------|
| 315 | 9ct yellow gold Crucifix pendant on a 9ct yellow gold chain, approx total weight 7.6g | £200-£300 |
| 316 | 9ct yellow gold Crucifix pendant on a 9ct yellow gold chain, approx total weight 2.8g | £70-£100 |
| 317 | 9ct gold and white stone Crucifix pendant, approx total weight 5.7g | £140-£200 |
| 318 | 9ct yellow gold filigree Crucifix pendant, approx total weight 9.2g | £220-£320 |
| 319 | 9ct yellow gold Crucifix pendant set with white stones, approx total weight 7.6g | £200-£300 |
| 320 | 9ct yellow gold and coloured stone Crucifix pendant, approx total weight 1.7g | £40-£60 |
| 321 | Two 9ct yellow gold Crucifix pendants, approx total weight 3.8g | £100-£150 |
| 322 | 9ct gold pendant in the form of a racing motor bike on a 9ct gold chain, approx total weight 7.5g | £180-£280 |
| 323 | 9ct yellow gold locket on a 9ct yellow gold chain, approx total weight 2.8g | £60-£90 |
| 324 | 9ct gold pendant on a 9ct gold chain, approx total weight 1.5g | £40-£60 |
| 325 | 9ct yellow gold disc pendant on a 9ct gold chain, approx total weight 3.7g | £100-£150 |
| 326 | 9ct yellow gold I Love You spinning pendant on a 9ct yellow gold chain, approx total weight 6.5g | £150-£200 |
| 327 | 9ct yellow gold pendant set with white stones on a 9ct gold chain, approx total weight 5.8g | £120-£180 |
| 328 | 9ct yellow gold pendant on a 9ct yellow gold chain, approx total weight 4.5g | £120-£180 |
| 329 | 9ct yellow gold pendant in the form of Elvis Presley on a 9ct yellow gold chain, approx total weight 2.8g | £80-£120 |
| 330 | 9ct gold pendant on a 9ct gold chain, approx total weight 3.4g | £80-£120 |
| 331 | 9ct gold articulated pendant in the form of a clown set with coloured stones on a 9ct gold chain, approx total weight 6.1g | £180-£280 |
| 332 | 9ct gold articulated pendant in the form of a clown with white stones on a 9ct yellow gold chain, approx total weight 3.6g | £100-£150 |
| 333 | 9ct yellow gold and coloured stone articulated pendant in the form of a girl with pigtails on a 9ct gold chain, approx total weight 5.3g | £150-£200 |

| Lot No. | Description | Estimate |
|---------|---|-------------|
| 334 | 9ct gold and coloured stone pendant on a 9ct gold chain, approx total weight 5g | £150-£200 |
| 335 | 9ct yellow gold pendant with a coloured stone on a 9ct yellow gold chain, approx total weight 3.4g | £70-£100 |
| 336 | 9ct yellow gold 2002 Golden Jubilee pendant in the form of a crown on a 9ct yellow gold chain, approx total weight 1.7g | £40-£60 |
| 337 | 9ct yellow gold pendant on a 9ct yellow gold chain, approx total weight 1.2g | £30-£50 |
| 338 | 9ct yellow gold bracelet, approx total weight 1.9g | £40-£60 |
| 339 | 9ct yellow gold rope twist necklace, approx total weight 2.9g | £70-£100 |
| 340 | 9ct gold necklace, approx total weight 12.9g | £300-£500 |
| 341 | A quantity of 9ct gold jewellery to include bracelets, a necklace and earrings, approx total weight 4.6g | £100-£150 |
| 342 | 9ct yellow gold rope twist necklace and a matching 9ct yellow gold rope twist bracelet, approx total weight 7.2g | £180-£280 |
| 343 | 9ct gold and coloured stone necklace, approx total weight 4.5g | £120-£180 |
| 344 | 9ct multi coloured gold bracelet, approx total weight 8.1g | £200-£300 |
| 345 | 9ct white gold fancy link bracelet, approx total weight 4.7g | £120-£180 |
| 346 | 9ct yellow gold curb link bracelet, approx total weight 5g | £120-£180 |
| 347 | 9ct yellow gold rope twist bracelet, approx total weight 1.5g | £40-£60 |
| 348 | 18ct three colour gold bracelet with articulated links, approx total weight 44.6g | £2500-£3500 |
| 349 | 9ct white gold articulated bracelet, approx total weight 7.7g | £150-£200 |
| 350 | 9ct yellow gold gentlemen's identity bracelet, approx total weight 56.2g | £1200-£1800 |
| 351 | 9ct yellow gold bracelet, approx total weight 4.6g | £100-£150 |
| 352 | 9ct yellow gold snakeskin bracelet, approx total weight 2.5g | £50-£80 |
| 353 | 14ct yellow gold bracelet, approx total weight 2.7g | £100-£150 |
| 354 | A quantity of gold jewellery, approx total weight 9.4g | £200-£300 |
| 355 | 9ct yellow gold chain with a tigers eye pendant, approx total weight 11.5g | £150-£200 |
| 356 | 9ct yellow gold Star of David pendant on a 9ct gold chain, approx total weight 14.6g | £300-£500 |
| 357 | Gold filigree and jewelled pendant in the form of a Torah scroll, approx total weight 7.0g | £200-£300 |
| 358 | A yellow gold and diamond floral brooch, approx total weight 12.6g | £600-£900 |

| Lot No. | Description | Estimate |
|---------|--|-------------|
| 359 | 9ct yellow gold double sided blood stone and cornelian swivel pendant, approx total weight 4.7g | £80-£120 |
| 360 | Three 9ct yellow gold pendants, approx total weight 4.8g | £120-£180 |
| 361 | 9ct yellow gold love-heart bangle set with a coloured stone, approx total weight 5.6g | £150-£200 |
| 362 | 18ct yellow gold engine turned fountain pen with retractable gold nib, | £80-£120 |
| 363 | A quantity of 9ct yellow gold gentlemen's accessories to include a pill holder, a toothpick and a cigar cutter with scissors | £500-£800 |
| 364 | 18ct yellow gold and white stone necklace, approx total weight 7.6g | £400-£600 |
| 365 | Yellow gold fine link chain, tested 14ct, approx total weight 2.4g | £100-£150 |
| 366 | 14ct multi coloured gold bracelet, approx total weight 18.4g | £700-£1000 |
| 367 | 14ct yellow gold multi link necklace, approx total weight 13.6g | £500-£800 |
| 368 | A 9ct gold locket and chain and a multicoloured gold necklace A/F | £100-£150 |
| 369 | 9ct yellow gold fancy link bracelet, approx total weight 24.2g | £600-£900 |
| 370 | A quantity of gold jewellery to include brooches, pins and a child's bracelet with charms, approx total weight 8.1g | £150-£200 |
| 371 | 1972 Krugerrand set in a 9ct gold pendant | £2800-£3800 |
| 372 | 1916 Cuban Cinco pesos gold coin in a 9ct gold pendant, approx total weight 13.1g | £700-£1000 |
| 373 | 1899 ten rouble gold coin, approx total weight 8.4g | £600-£900 |
| 374 | 9ct yellow gold 1998 quarter sovereign pendant on a 9ct yellow gold chain, approx total weight 3.2g | £180-£280 |
| 375 | 9ct yellow gold pendant on a 9ct yellow gold chain, approx total weight 5.5g | £150-£200 |
| 376 | 2000 half sovereign mounted in a 9ct gold pendant, approx total weight 5.1g | £280-£380 |
| 377 | 1968 sovereign set in a 9ct gold and white stone pendant on a 9ct yellow gold chain, approx total weight 15.6g | £700-£1000 |

**There will be a 5 minute interval
before lot 378
the Silver & Silver Plate Collection**

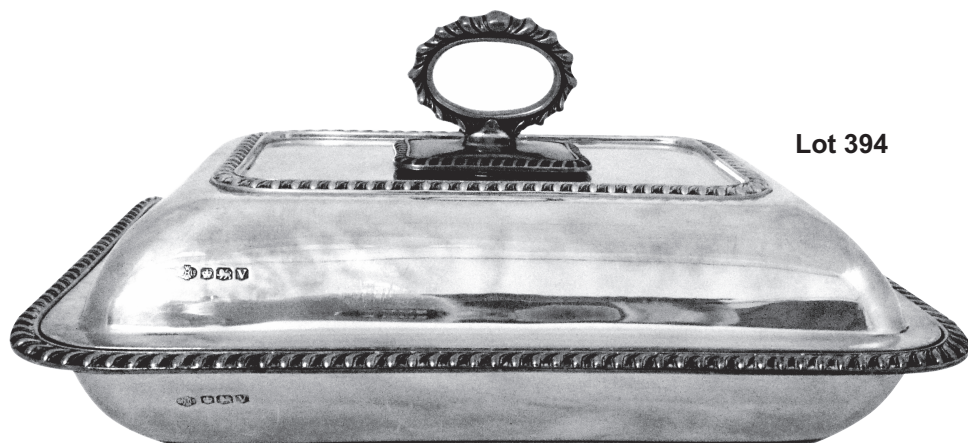
Lot No.

Description

Estimate

Silver & Silver Plate collection

- | | | |
|-----|---|-------------|
| 378 | Elkington and Company canteen of hallmarked silver flatware to include knives, forks, spoons, soup spoons, fish eaters and condiments, Birmingham 1940, approx total weight of weighable silver 8307g | £6000-£9000 |
| 379 | Walker and Hall hallmarked silver oval gallery tray with two handles on four bun feet, Sheffield 1941, approx total weight 519g | £1600-£2400 |
| 380 | A hallmarked silver salver with Chippendale border on four pad feet, Birmingham 1931, 27.5cm (d), approx total weight 521g | £250-£350 |
| 381 | A hallmarked silver Art Deco style four piece tea and coffee set, Sheffield 1940, approx total weight 1499g | £800-£1200 |
| 382 | A hallmarked silver four piece tea and coffee set oval form with Celtic borders, Birmingham 1936, approx total weight 1848g | £1000-£1500 |
| 383 | A pair of Edwardian hallmarked silver candlesticks of oval neoclassical Adam design with tapered reeded stem and gadrooned weighted base, Fordham & Faulkner Sheffield 1906, 30cm (h) | £300-£500 |
| 384 | A pair of hallmarked silver table candlesticks, the stems of shaped rectangular form on circular bases, Birmingham 1922 and 1923, 16cm (h) | £150-£200 |
| 385 | A hallmarked silver Menorah of customary form on raised square base, London 1959, approx total weight 317g | £150-£200 |



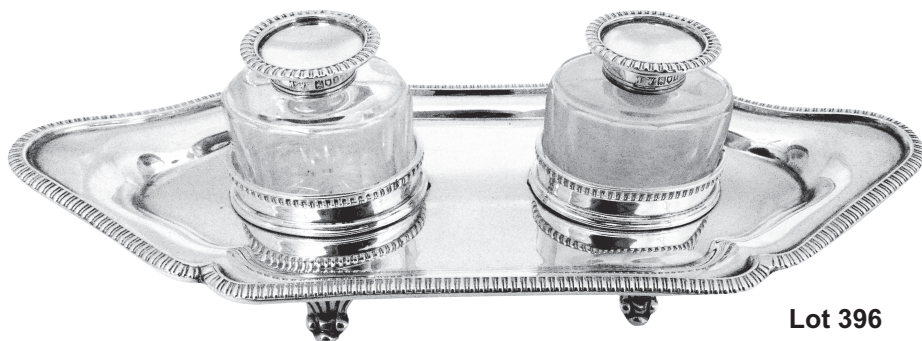
Lot 394

| Lot No. | Description | Estimate |
|---------|--|------------|
| 386 | George II hallmarked silver coffee pot, tapering cylindrical with flat chased bands of flowers, leaves and scrolls, carved fruitwood double scroll handle and shell capped spout, the raised hinged cover with spool finial, London circa 1750 by Peze Pilleau, approx total weight 470g | £700-£1000 |
| 387 | Walker and Hall hallmarked silver fruit stand of hexagonal shape with pierced border, all on raised hexagonal base, Sheffield 1921, approx total weight 610g | £300-£500 |
| 388 | A hallmarked silver circular fruit stand with applied moulded border on raised circular base, London 1912, approx total weight 396g | £200-£300 |
| 389 | A hallmarked silver presentation trophy goblet engraved and embossed in Renaissance style mounted on a green onyx stepped circular base with applied hallmarked silver inscription The Daniel Prenn Plate York 1977, Sheffield 1976, 26.5cm (h) approx weight of silver 410g | £200-£300 |
| 390 | A hallmarked silver presentation mug with double scroll handle on stepped circular base, London 1929 by Richard Comyns, 13cm (h) approx total weight 340g | £160-£200 |



Lot 395

| Lot No. | Description | Estimate |
|---------|--|-----------|
| 391 | A Victorian hallmarked silver goblet engraved with stylised leaves on beaded knopped stem and raised circular base, London 1869, approx total weight 202g | £100-£150 |
| 392 | A hallmarked silver two handled trophy cup embossed with leaves and scrolls and two double scroll side handles on raised circular base, London 1926, approx total weight 219g | £100-£150 |
| 393 | George III hallmarked silver seven bar toast rack shaped oval with pierced oval handle all on four bracket feet, London 1804, approx total weight 220g | £200-£300 |
| 394 | A hallmarked silver entrée dish and cover rectangular with gadrooned border and bayonet fitted handle to raised pull off cover, Sheffield 1938 by William Hutton and Sons, approx total weight 1175g | £600-£900 |
| 395 | A hallmarked silver cocktail shaker of customary form, Birmingham 1934, approx total weight 401g | £250-£350 |
| 396 | Mappin and Webb hallmarked silver ink stand shaped oval with gadrooned borders on four fluted bracket feet, the detachable glass inkwells with hinged covers, London 1913, approx total weight 277g | £150-£200 |
| 397 | Goldsmiths and Silversmith Company hallmarked silver rectangular engine turned cigarette box with cedar wood lining, London 1919 | £80-£120 |
| 398 | Goldsmiths and Silversmith Company hallmarked silver rectangular cigarette box with cedar wood lining, London 1914 | £80-£120 |



Lot 396

| Lot No. | Description | Estimate |
|---------|--|-----------|
| 399 | A hallmarked silver rectangular engine turned cigarette box with cedar wood lining, Chester 1939 | £100-£150 |
| 400 | A hallmarked silver rectangular engine turned cigarette box with cedar wood lining, Birmingham 1959 | £70-£100 |
| 401 | Garrard and Co. London hallmarked silver rectangular engine turned cigarette box with cedar wood lining, London 1954 | £100-£150 |
| 402 | A hallmarked silver fruit stand with pierced border on raised circular base, Birmingham 1912 by William Hutton and Sons | £70-£100 |
| 403 | George IV hallmarked silver shaped oval and pierced bonbon dish with swing handle on shaped oval pierced base, London 1829, approx total weight 125g | £70-£100 |
| 404 | A hallmarked silver porringer with scroll handles on rim foot, Sheffield 1944, approx total weight 210g | £120-£180 |
| 405 | A Victorian hallmarked silver bowl with gadrooned border and spirally fluted sides on circular spreading base, London 1887, approx total weight 251g | £150-£200 |
| 406 | George III hallmarked silver salt cauldron form, gadrooned border, gilt wash bowl, on three winged paw feet, glass liner, London 1815 and condiment spoon, approx total weight of silver 159g | £100-£150 |
| 407 | A Victorian hallmarked silver leaf shaped bonbon dish on three ball feet, London 1886, approx total weight 64g | £50-£80 |
| 408 | A hallmarked silver nut dish on raised circular base, Sheffield 1937, approx total weight 95.7g | £50-£80 |
| 409 | A hallmarked silver bonbon dish with side handles on raised circular base, London 1946, approx total weight 140g | £70-£100 |
| 410 | A hallmarked silver bonbon basket with scroll pierced sides, rope twist border, swing handle and detachable blue glass liner on three pierced bracket feet, Chester 1928, approx weight of weighable silver 120g | £70-£100 |
| 411 | A hallmarked silver two handled bonbon dish with bar pierced border on raised pierced circular base, London 1913, approx total weight 284g | £150-£200 |
| 412 | A hallmarked silver two handled nut dish on raised circular base, London 1912, approx total weight 185g | £100-£150 |
| 413 | A pair of hallmarked silver sauce boats shaped oval with reeded loop handle on raised oval bases, Birmingham 1938, approx total weight 282g | £150-£200 |

| Lot No. | Description | Estimate |
|---------|---|-----------|
| 414 | A hallmarked silver cream jug oval with double scroll handle, all on three stepped hoof feet, London 1915, approx total weight 150g | £70-£100 |
| 415 | A hallmarked silver shaped circular coaster embossed with grapes and vines, Chester 1906, approx total weight 110g | £50-£80 |
| 416 | A cased set of Mappin and Webb, hallmarked silver and Mother of Pearl dessert eaters for six place settings, retailed by Garrard of London, Sheffield 1927 | £100-£150 |
| 417 | A pair of hallmarked silver berry spoons of customary form, approx total weight 122g | £70-£100 |
| 418 | A pair of hallmarked silver berry spoons of customary form with gilded bowls, approx total weight 114g | £60-£90 |
| 419 | A pair of hallmarked silver berry spoons, London 1805 later decorated, approx total weight 125g | £70-£100 |
| 420 | A pair of hallmarked silver salad servers, Birmingham 1953, approx total weight 136g | £70-£100 |
| 421 | A pair of hallmarked silver serving spoons in the form of Roman anointing spoons, London 1902, approx total weight 220g | £120-£180 |
| 422 | A pair of hallmarked silver salad servers, Birmingham 1910, approx total weight 95g | £50-£80 |
| 423 | A pair of Danish white metal and enamel serving spoons decorated with birds and flowers | £100-£150 |
| 424 | William IV hallmarked silver soup ladle fiddle and shell pattern, London 1836, approx total weight 323g | £200-£300 |
| 425 | George III hallmarked silver fiddle pattern soup ladle, London 1806 by William Eley and William Fearn, approx total weight 210g | £120-£180 |
| 426 | William IV hallmarked silver Kings pattern fish slice, fiddle and shell pattern with scroll pierced blade, London 1836, approx total weight 184g | £140-£200 |
| 427 | A hallmarked silver Kings pattern sauce ladle, Sheffield 1907, approx total weight 95g | £50-£80 |
| 428 | A pair of hallmarked silver sauce ladles fiddle and shell pattern, Sheffield 1938, approx total weight 211g | £120-£180 |
| 429 | A quantity of hallmarked silver to include a Victorian Scottish cream ladle, Edinburgh 1853 and three William IV fiddle and shell condiment spoons, London 1836, approx total weight 123g | £80-£120 |

| Lot No. | Description | Estimate |
|---------|--|-----------|
| 430 | Georg Jensen white metal acorn pattern carving knife and fork | £150-£200 |
| 431 | A cased hallmarked silver set of six grapefruit spoons by Edward Viner, Sheffield 1954, approx total weight 172g | £80-£120 |
| 432 | A quantity of white metal to include a pair of Russian fiddle pattern table spoons, three teaspoons and three vodka tots | £100-£150 |
| 433 | A cased set of hallmarked silver coffee spoons with bean terminals, Sheffield 1920, approx total weight 53g | £30-£50 |
| 434 | A quantity of hallmarked silver and white metal to include a bonbon dish, a trophy cup and spoons, approx total weight 380g (6) | £180-£280 |
| 435 | A Victorian cased set of hallmarked silver fish carvers, Sheffield 1856 | £100-£150 |
| 436 | A set of four hallmarked silver salt and pepperettes of tapering cylindrical form, Sheffield 1949 and 1951, approx total weight 268g | £140-£200 |
| 437 | A hallmarked silver sugar sifter of panelled cylindrical form with domed pull off cover, London 1908 and a hallmarked silver toast rack, Birmingham 1929, approx total weight 194g | £120-£180 |
| 438 | A quantity of hallmarked silver to include a cut glass and silver sugar sifter, a vase, two ashtrays and a Marmite cover by Theo Fennel (5) | £70-£100 |
| 439 | A hallmarked silver sugar sifter of rectangular form on an octagonal base, London 1932, approx total weight 169g | £80-£120 |
| 440 | A hallmarked silver sugar sifter of vase form on raised circular base, Birmingham 1966, approx total weight 104g | £50-£80 |
| 441 | A hallmarked silver sugar sifter of baluster form on raised circular base, Birmingham 1909, approx total weight 115g | £60-£90 |
| 442 | A hallmarked silver pierced bonbon dish on three paw feet, Birmingham 1921, approx total weight 89g | £50-£80 |
| 443 | A plain white metal bowl, 12.5cm (d) | £50-£80 |
| 444 | A hallmarked silver christening cup embossed with flower and leaves, Sheffield 1902 and a white metal shaped oval nut dish on four scroll feet | £100-£150 |
| 445 | A hallmarked silver capstan inkwell, Birmingham 1922 and a hallmarked silver drum shaped desk clock, silvered dial with Arabic numerals all on four ball feet, Birmingham 1929 | £100-£150 |
| 446 | A hallmarked silver figurine of a soldier, London 1971, approx total weight 158.8g, 10cm (h) | £100-£150 |

| Lot No. | Description | Estimate |
|---------|---|-----------|
| 447 | Ten hallmarked silver Kiddush cups of various form and size, approx total weight 340g | £180-£280 |
| 448 | A hallmarked silver square cigarette box with cedar wood lining, marks rubbed | £30-£50 |
| 449 | Two hallmarked silver photograph frames, Birmingham 1909 and Birmingham 1911 | £50-£80 |
| 450 | A hallmarked silver desk stand with day, date and month cards, Birmingham 1901 a hallmarked silver and leather bound address book by William Comyns and a hallmarked silver oval photograph frame (3) | £70-£100 |
| 451 | Five hallmarked silver and glass dressing table jars and dishes, approx total weight of weighable silver 121g | £60-£90 |
| 452 | A quantity of hallmarked silver dressing table brushes, a hand mirror and a heart shaped pill box (8) | £80-£120 |
| 453 | George III silver toddy ladle with inset coin and turned wooden handle, engraved 1761 | £50-£80 |
| 454 | A hallmarked silver card case shaped rectangular engine turned with hinged cover on suspensory chain, Chester 1914, approx total weight 72g | £40-£60 |
| 455 | George IV hallmarked silver sugar tongs, London 1825 and a bottle stopper with white metal mount | £40-£60 |
| 456 | A hallmarked silver and Mother of Pearl baby teething rattle by Crisford and Norris and a Victorian hallmarked silver berry spoon bowl | £80-£120 |
| 457 | A hallmarked silver engine turned cigarette case, Birmingham 1976 and a hallmarked silver engine turned pocket knife | £100-£150 |
| 458 | A quantity of hallmarked silver to include compacts, a lipstick case and a napkin holder (4) | £150-£200 |
| 459 | A quantity of hallmarked silver and white metal to include a cake slice, sauce ladles, forks and butter knives (10) | £80-£120 |
| 460 | A quantity of hallmarked silver to include a cake slice, a bread knife, spoons, forks and a cover for a sugar sifter, approx weight of weighable silver 118g (10) | £50-£80 |
| 461 | A set of twelve hallmarked silver coffee spoons, Sheffield 1923, approx total weight 105g | £60-£90 |
| 462 | Mappin and Webb Victorian cased set of six teaspoons and a pair of tongs, Sheffield 1897, approx total weight 112g | £50-£80 |

| Lot No. | Description | Estimate |
|---------|---|-----------|
| 463 | A cased set of Kings pattern fish eaters for six place settings with hallmarked silver handles | £30-£50 |
| 464 | A quantity of hallmarked silver to include napkin rings, a pill box, a sugar sifter, condiments, a butter knife and a condiment spoon approx total weight of weighable silver 473g (14) | £200-£300 |
| 465 | A cased set of gilt metal coffee spoons | £30-£50 |
| 466 | A white metal Kiddush cup and coaster and a four piece silver plated tea and coffee set | £50-£80 |
| 467 | A pair of French silver plated fruit stands with scroll pierced borders supported by scrolling leaf work on triform bases, circa 1890, 20.5 x 20cm | £80-£120 |
| 468 | A set of six WMF Art Nouveau tea glass holders, the pierced shaped handles flanking the pierced body decorated with relief females in profile and flower in her hair | £200-£300 |
| 469 | A canteen of silver plated flatware for twelve place settings | £100-£150 |
| 470 | A quantity of silver plated flatware to include knives, forks spoons, soup spoons, serving spoons fish eaters, and a Mappin and Webb sauce boat | £100-£150 |
| 471 | A quantity of Kings pattern silver plated flatware to include knives, forks, spoons and fish eaters | £80-£120 |
| 472 | A quantity of French silver plated flatware for twelve place settings to include knives, forks, spoons, fish eaters and teaspoons | £120-£180 |
| 473 | A quantity of silver plated flatware and a cased set of teaspoons | £70-£100 |
| 474 | A quantity of silver plate to include two Mappin and Webb coasters, a set of tazzas, dishes and condiments | £60-£90 |
| 475 | A quantity of silver plate to include ice cream cups, trays, condiments, dishes and flatware | £120-£180 |
| 476 | A quantity of silver plated flatware, a candelabrum and a four piece teaset | £60-£90 |
| 477 | A silver plated four piece teaset and a silver plated two handled tray | £50-£80 |
| 478 | A quantity of silver plate to include a campagna shaped champagne cooler, a cocktail shaker set with four glasses and a pair of magnum coasters | £50-£80 |

Notes

We are pleased to offer online bidding via
www.easyliveauction.com and www.the-saleroom.com
The live auction will allow you watch the sale as it happens
in real time and listen to the auctioneer via a live audio feed.

To view the catalogue and register for the sale please logon to
www.the-saleroom.com/busheyauctions
or www.easyliveauction.com/busheyauctions
Please note our online bidding terms and conditions

In addition to this service we offer
absentee/commission and telephone bids
Please contact Richard or Linda for further information
020 8386 2552 or 07504 201202



the-saleroom.com

Valuation Days

Friday 19th December and 30th January
9am to 5pm at our Watford showroom
Unit 9 Shakespeare Industrial Estate
Watford
WD24 5RR

**Please call or email to book an appointment
or a home visit on any other day
NOW ACCEPTING ENTRIES**

tel: 020 8386 2552
mobile: 07504 201202
e-mail: enquiries@busheyauctions.com

Next Auction Date

Timed Online auction 17th to 25th January
Diecast and Model Railways

Online live auction 26th February
Fine Art, Antiques, Collectables,
Jewellery and Silver

**Please check the website for confirmation
and viewing times
www.busheyauctions.com**



Lot 59

BUSHEY Auctions

tel: 0208 386 2552

mobile: 07504 201202

email: enquiries@busheyauctions.com

visit our website

www.busheyauctions.com